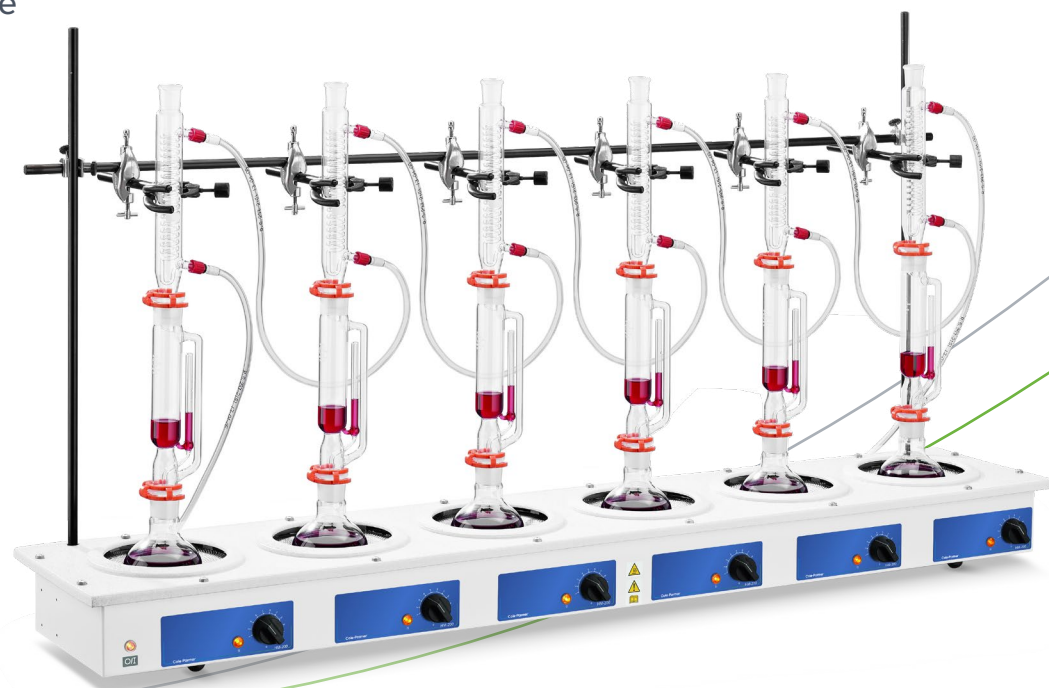


## Cole-Parmer® HM-200 and SHM-200 6 Position Multi-Mantles

- Individual built-in solid state electronic controls enable easy regulation of heater, while removing sparking associated with mechanical switching
- Three 12.7mm diameter support rods are included
- Round bottom flask capacity from 100mL to 1000mL at all 6 positions
- Top cover is polypropylene and external surfaces are powder coated giving good general chemical resistance
- Coiled heating element is suspended within a thermal insulating cartridge to provide maximum heat transfer and support
- Neon lights indicate when power is on and supplied to heaters and, if applicable, supplied to stirrers



## Ordering Information

Description	Ordering Number	Series No.	Model No.	Legacy Sku.
6 x 100mL, 230v 50/ 60Hz, 420W UK and EU plug	03076-25	HM-200	HM-200-MP6-100	EME60100/CEB
6 x 100mL, 115v 50/ 60Hz, 420W	03076-24	HM-200	HM-200-MP6-100-115	EME60100/CEBX1CEBX1
6 x 250mL, 230v 50/ 60Hz, 900W UK and EU plug	03076-28	HM-200	HM-200-MP6-250	EME60250/CEB
6 x 250mL, 115v 50/ 60Hz, 900W	03076-27	HM-200	HM-200-MP6-250-115	EME60250/CEBX1CEBX1
6 x 500mL, 230v 50/ 60Hz, 1200W UK and EU plug	03076-31	HM-200	HM-200-MP6-500	EME60500/CEB
6 x 500mL, 115v 50/ 60Hz, 1200W	03076-30	HM-200	HM-200-MP6-500-115	EME60500/CEBX1CEBX1
6 x 1000mL, 230v 50/ 60Hz, 1800W UK and EU	03076-34	HM-200	HM-200-MP6-1000	EME61000/CEB
6 x 1000mL, 115v 50/ 60Hz, 1800W	03076-33	HM-200	HM-200-MP6-1000-115	EME61000/CEBX1

6 x 100mL, 230v 50/ 60Hz, 500W UK and EU plug	03076-37	SHM-200	SHM-200-MP6-100	EMEA60100/CE
6 x 100mL, 115v 50/ 60Hz, 500W	03076-36	SHM-200	SHM-200-MP6-100-115	EMEA60100/CEX1
6 x 250mL, 230v 50/ 60Hz, 980W UK and EU plug	03076-40	SHM-200	SHM-200-MP6-250	EMEA60250/CE
6 x 250mL, 115v 50/ 60Hz, 980W	03076-39	SHM-200	SHM-200-MP6-250-115	EMEA60250/CEX1
6 x 500mL, 230v 50/ 60Hz, 1280W UK and EU plug	03076-43	SHM-200	SHM-200-MP6-500	EMEA60500/CE
6 x 500mL, 115v 50/ 60Hz, 1280W	03076-42	SHM-200	SHM-200-MP6-500-115	EMEA60500/CEX1
6 x 1000mL, 230v 50/ 60Hz, 1880W UK and EU plug	03076-46	SHM-200	SHM-200-MP6-1000	EMEA61000/CE
6 x 1000mL, 115v 50/ 60Hz, 1880W	03076-45	SHM-200	SHM-200-MP6-1000-115	EMEA61000/CEX1

## Technical Specification

Specification	HM-200-MP6-100	HM-200-MP6-100-115	HM-200-MP6-250	HM-200-MP6-250-115	HM-200-MP6-500	HM-200-MP6-500-115	HM-200-MP6-1000	HM-200-MP6-1000-115
Flask Capacity	6 x 100mL	6 x 100mL	6 x 100mL	6 x 100mL	6 x 100mL	6 x 100mL	6 x 100mL	6 x 100mL
Dimensions (d x w x h), mm	270 x 1210 x 110mm	270 x 1210 x 110mm	270 x 1210 x 110mm	270 x 1210 x 110mm	285 x 1450 x 130mm	285 x 1450 x 130mm	285 x 1450 x 130mm	285 x 1450 x 130mm
No. of Recesses	6	6	6	6	6	6	6	6
Shipping weight, kg	10.1kg	10.1kg	10.1kg	10.1kg	12.5kg	12.5kg	12.5kg	12.5kg

Specification	SHM-200-MP6-100	SHM-200-MP6-100-115	SHM-200-MP6-250	SHM-200-MP6-250-115	SHM-200-MP6-500	SHM-200-MP6-500-115	SHM-200-MP6-1000	SHM-200-MP6-1000-115
Flask Capacity	6 x 100mL	6 x 100mL	6 x 100mL	6 x 100mL	6 x 100mL	6 x 100mL	6 x 100mL	6 x 100mL
Dimensions (d x w x h), mm	270 x 1210 x 110mm	270 x 1210 x 110mm	270 x 1210 x 110mm	270 x 1210 x 110mm	285 x 1450 x 130mm	285 x 1450 x 130mm	285 x 1450 x 130mm	285 x 1450 x 130mm
No. of Recesses	6	6	6	6	6	6	6	6
Shipping weight, kg	10.1kg	10.1kg	10.1kg	10.1kg	12.5kg	12.5kg	12.5kg	12.5kg

## Cole-Parmer® HM-200 & SHM-200 6 Position Multi-Mantles

The Cole-Parmer® Multi (Extraction) Mantle with six recesses has a built-in electronic controller and offers a choice of heater only or heater/stirrer combination models.

The vented case's unique air flow ensures the outer case remains safe to touch.

### Additional Features for SHM-200 series models

- Allow the solution to be stirred and heated simultaneously
- Provide stirring speeds of between 50 to 1000rpm
- One stirring control operates each set of six recesses





# WolfLabs

**Pricing on any accessories shown can be found by keying the part number into the search box on our website.**

The specifications listed in this brochure are subject to change by the manufacturer and therefore cannot be guaranteed to be correct. If there are aspects of the specification that must be guaranteed, please provide these to our sales team so that details can be confirmed.

**[www.wolflabs.co.uk](http://www.wolflabs.co.uk)**

**Tel : 01759 301142**

**Fax : 01759 301143**

**[sales@wolflabs.co.uk](mailto:sales@wolflabs.co.uk)**

Please contact us if this literature doesn't answer all your questions.